

The Forest and the Garden of Gravetye:
A Legacy and an Inspiring Vision for the Future

RHS Chelsea Flower Show 2019

Landscape designers:
Henri Hurtebize and Côme Savagnac
April 2018



A view through the forest toward the clearing

The design concept

Left by William Robinson to the Forestry Commission, the Gravetye Estate has since become, along with his forward-thinking writings, one of his most important legacy.

The close collaboration between the Forestry Commission and Gravetye Manor Hotel has made this transmission possible from one generation to the next. Facing a forever-evolving natural environment, the forest is constantly adapting in order to cope with new challenges.

In its original form, and as created and planted by William Robinson in the late nineteenth century, the estate and the garden were intimately linked through a complex and unique system. A series of gardens and a forest planted of 120 000 trees of all kinds, have lead to a specific management, which has defined the landscape.

Our RHS Chelsea Flower Show 2019's garden: **The Forest and the Garden of Gravetye: a Legacy and an Inspiring Vision for the Future**, will aim to stress the history of the:

- human involvement;
- evolution of the natural environment and its aesthetic.

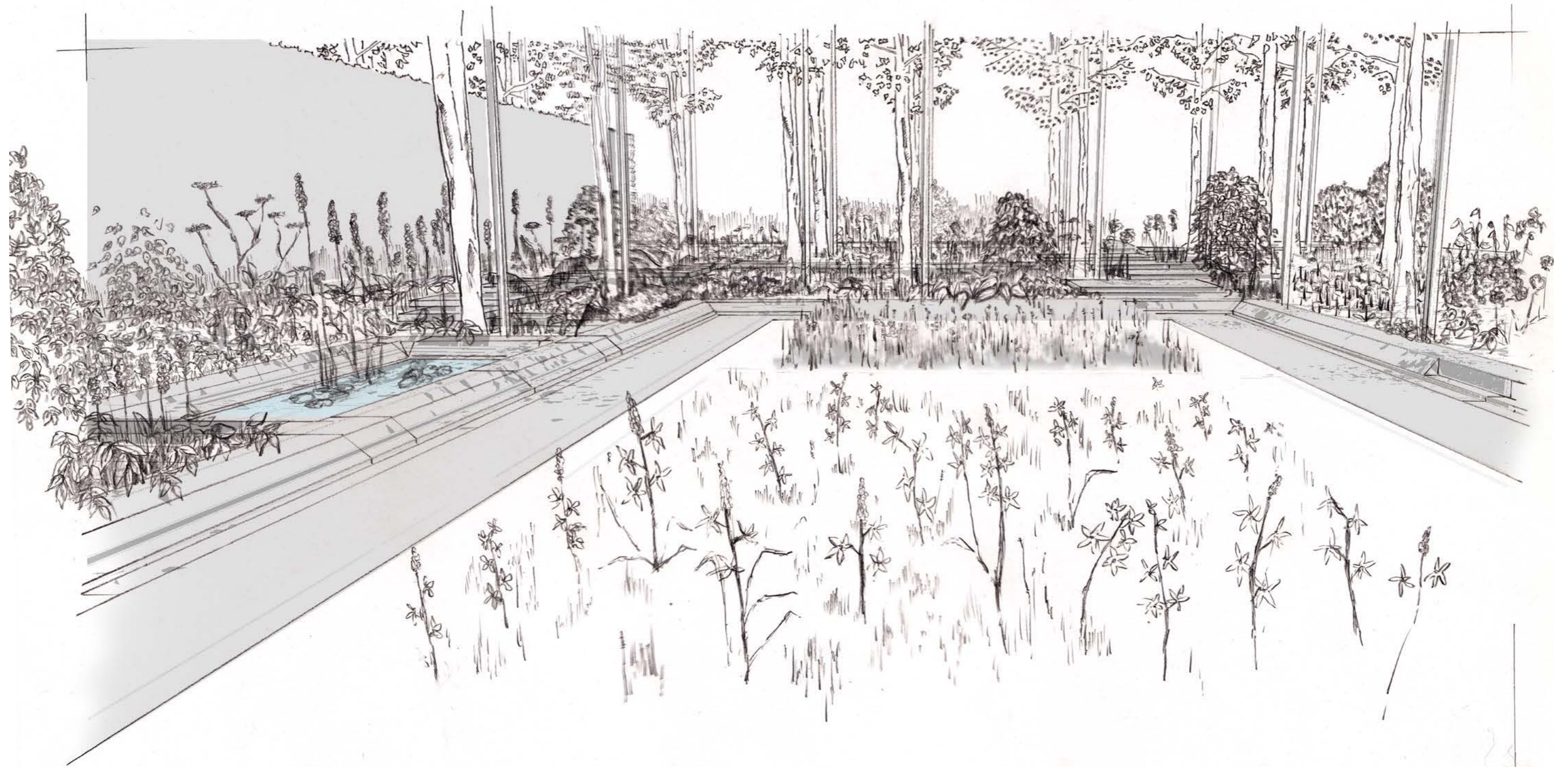
All of the following aspects and characteristics should be a source of inspiration for the future of the coming generation:

As per Gravetye Estate's organization: the Manor Hotel surrounded by the forest, our garden will aim to emphasize the contrast between:

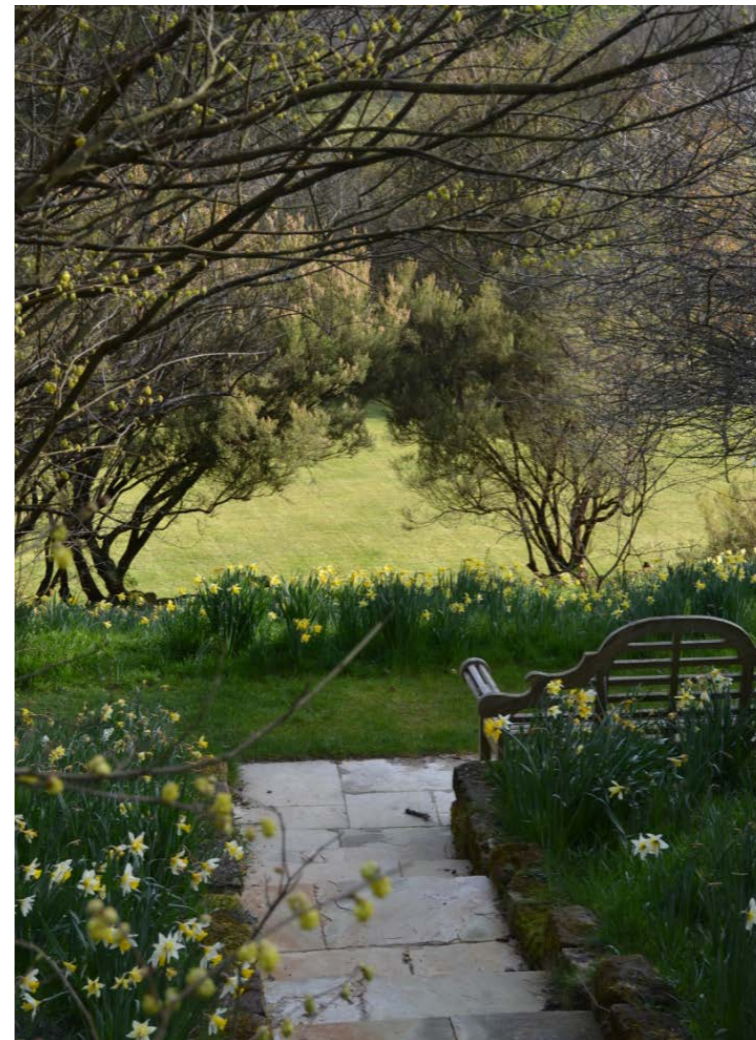
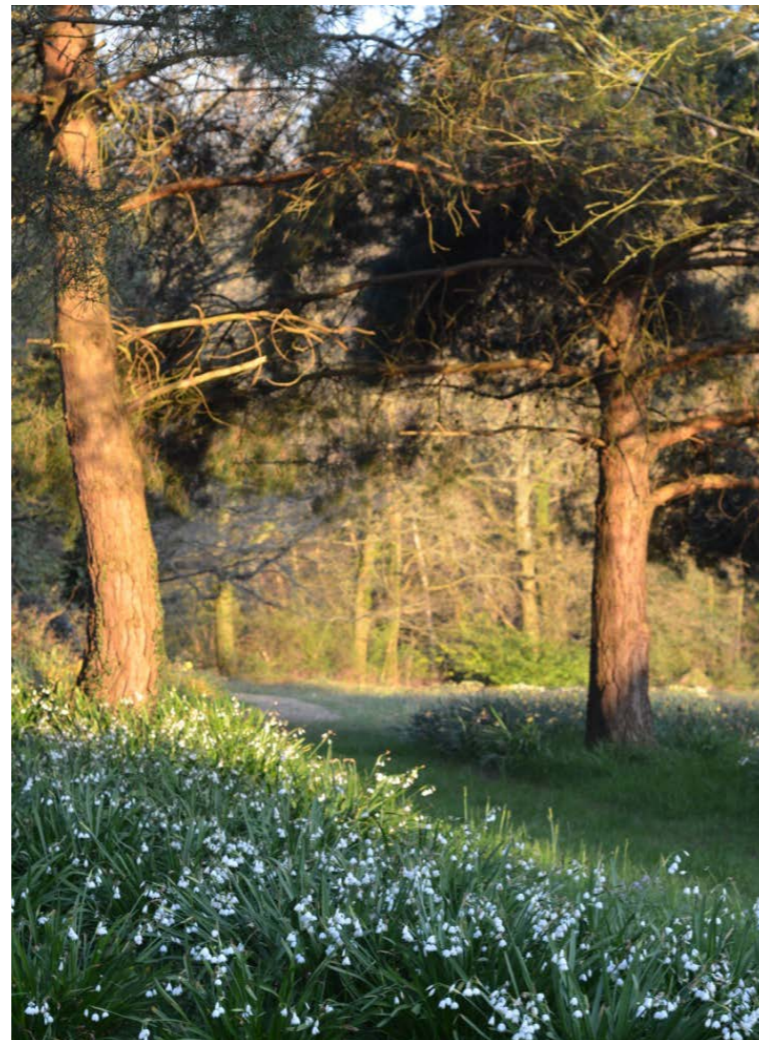
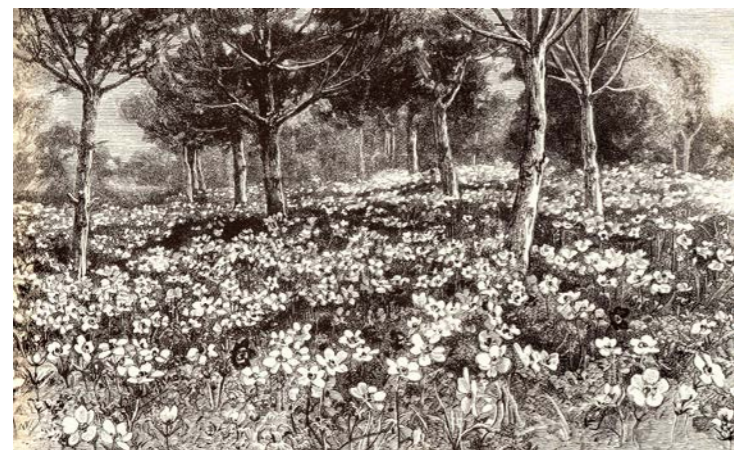
- an intimate space and a more open area;
- the wild and a more formal garden.
- combination of native and exotic plants;
- expressing the refinement of Gravetye Manor Hotel and Restaurant through our design and the use of thoughtfully detailed materials.

Gravetye Manor is a unique example of how two entities: the forest and the gardens are intractably linked, a symbiosis where the garden and the forest become more resilient and able to face new evolutions.

It is this association and complementarity that makes **The Forest and the Garden of Gravetye: a Legacy and an Inspiring Vision for the Future**.



The camassia meadow contrasts with the surrounding woodland and its under planting

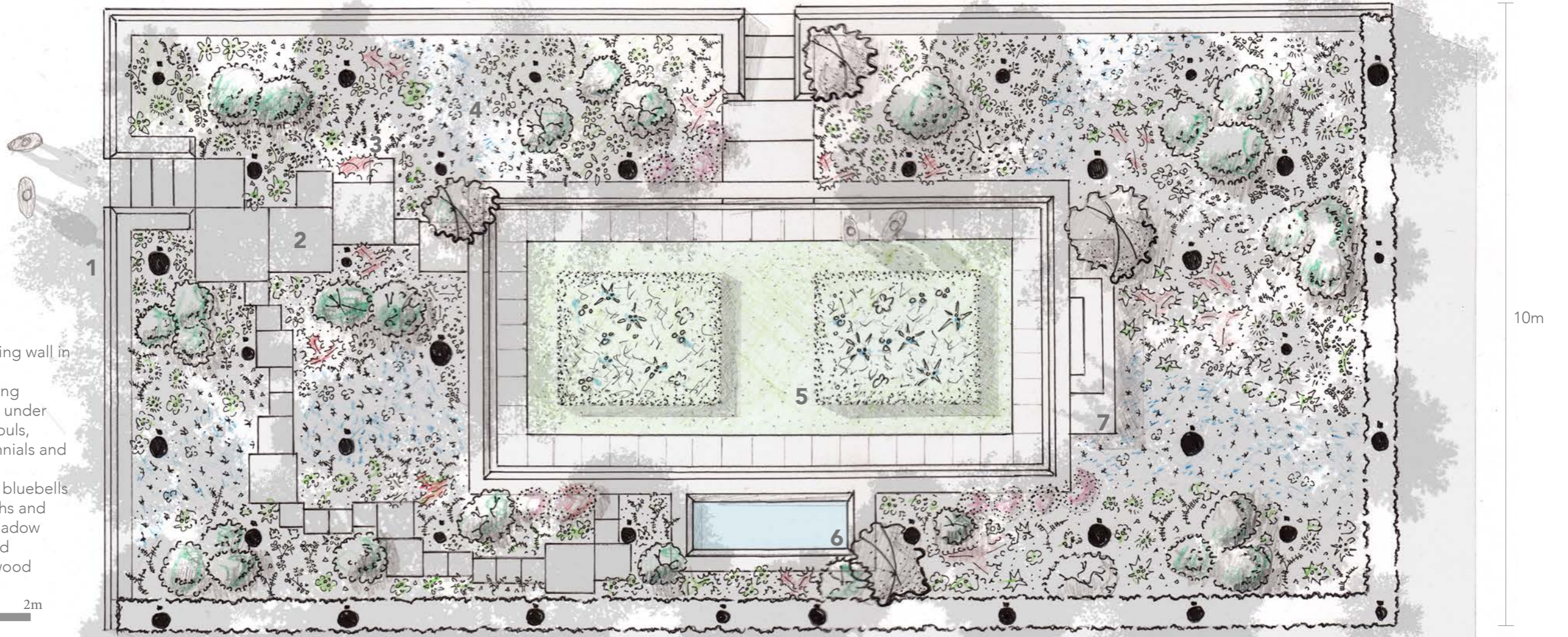


1	2
3	5
4	6

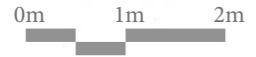
Reference images

- 1 - Aesthetic view of tree trunks in a British forest
- 2 - Woodland naturally planted with bluebells
- 3 - Illustration from "The Wild Garden" by W.R.

- 4 - Illustration from "The Wild Garden" by W.R.
- 5 - *Lecojum aestivum* 'Gravetye's Giant' at Gravetye Manor
- 6 - The Wild Garden at Gravetye Manor



- 1 - Low retaining wall in stone
- 2 - Stone paving
- 3 - Woodland underplanted with bulbs, natives, perennials and shrubs
- 4 - Sweeps of bluebells
- 5 - Turfed paths and cammasia meadow
- 6 - Stone pond
- 7 - Bench in wood



Planting plan

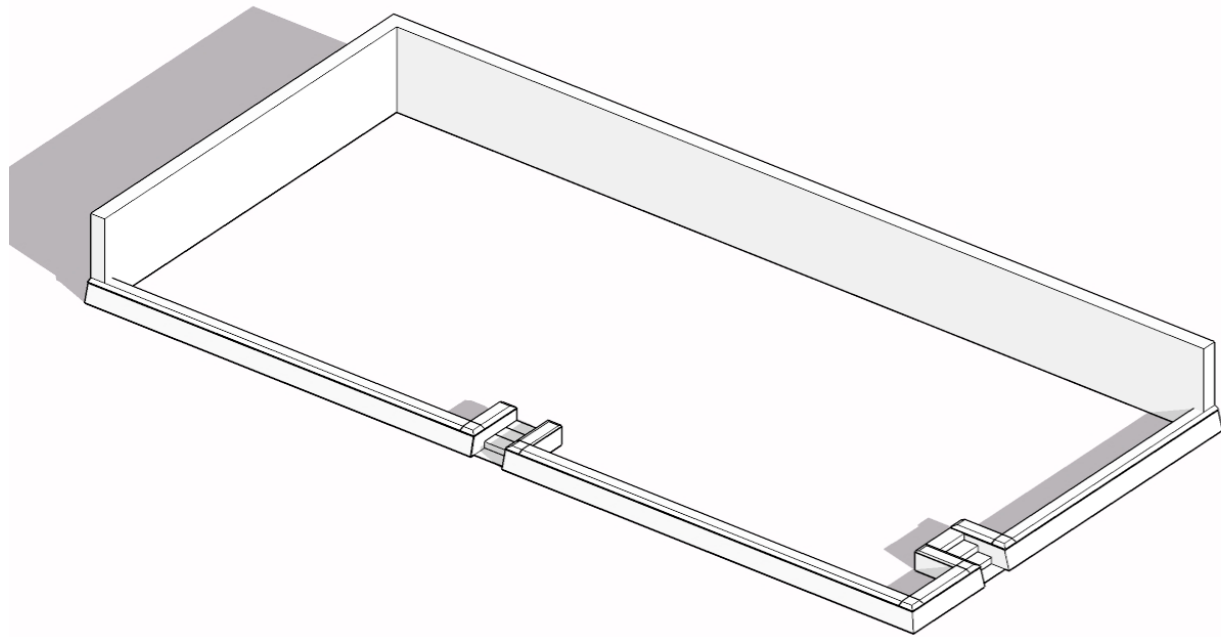
21m

10m

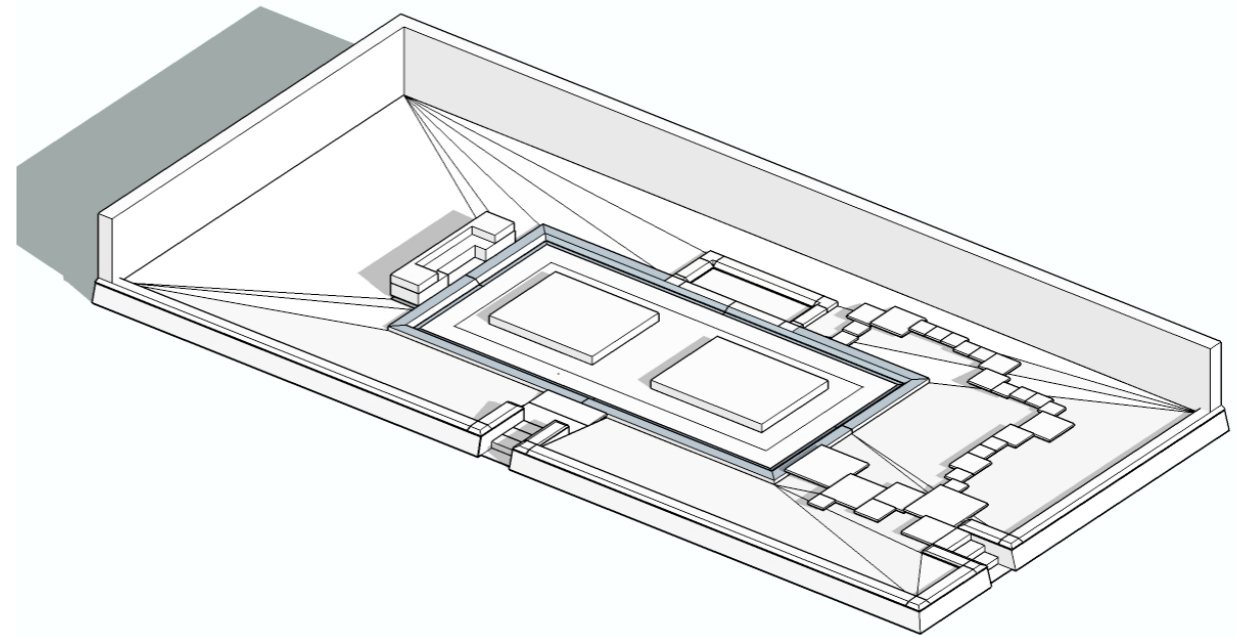


Masterplan

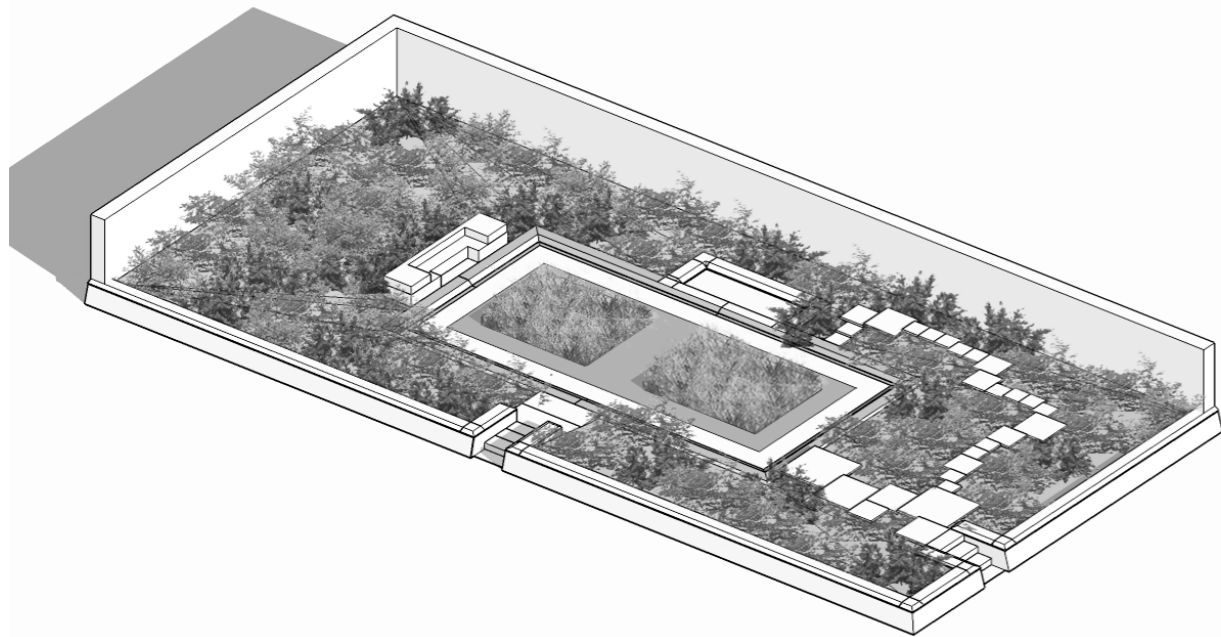
Different layers of the garden



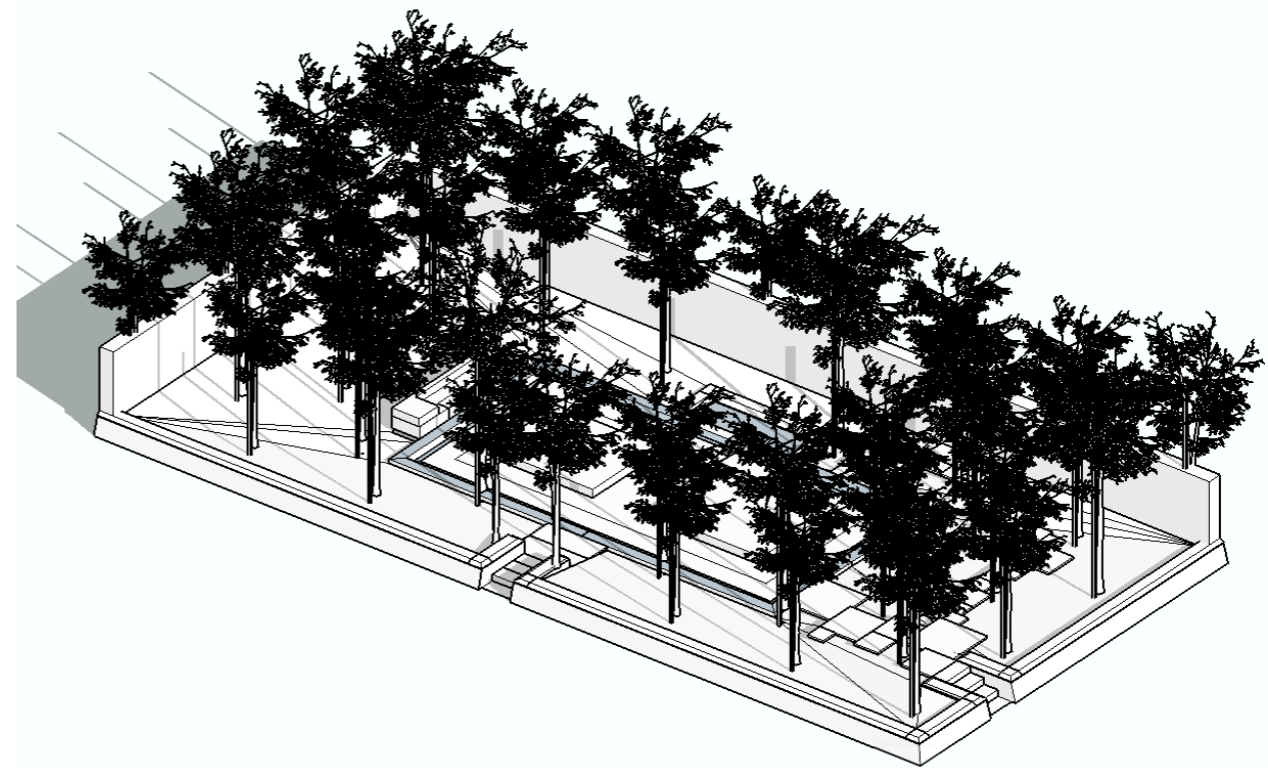
1 - Framework: hedges, yorstone steps and sandstone stone retaining walls



2 - Advance framework: stone coping, stone edging and paving detail



3 - Woodland under planting and clearing in the center



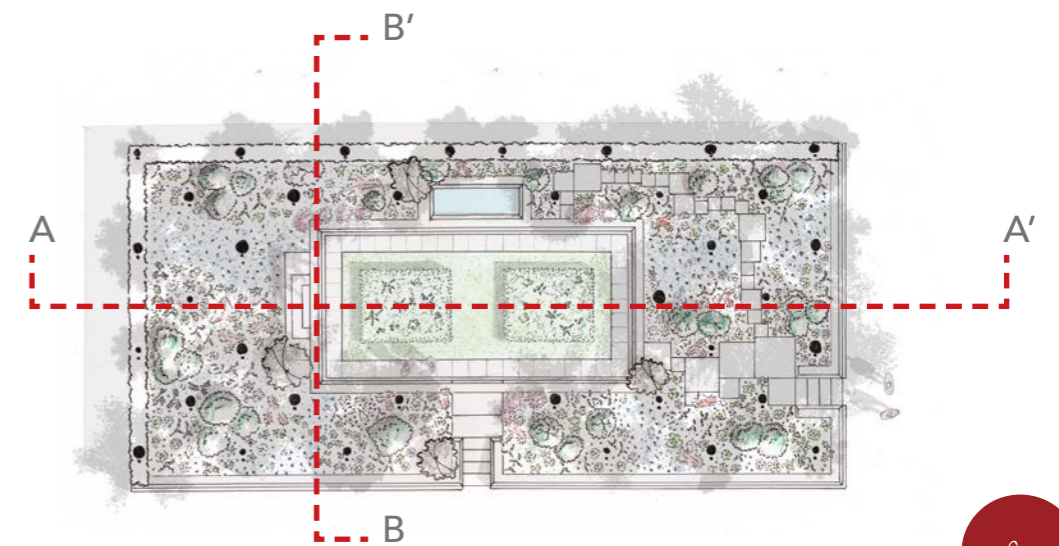
4 - Staggered row tree planting and tree canopy



Elevation A-A' 0m 1m 2m



Elevation B-B' 0m 1m 2m





Woodland planted with different species as well as different tree size



1 - *Fagus sylvatica* / Common beech
 2 - *Quercus robur* / English oak
 3 - *Quercus petraea* / Sessile oak
 4 - *Pinus sylvestris* / Scots pine
 5 - *Prunus padus* / Bird cherry
 6 - *Pinus nigra* / Corsican pine
 7 - *Magnolia Campbellii* / Campbell's Magnolia
 8 - *Davidia involucrata* / Handkerchief tree
 9 - *Cercis canadensis* / Canadian redbud

The Trees

The organization of our garden is defined following a grid of trees planted in staggered rows, which could be commonly found in Pines productive forest. This grid will be planted with different tree species of different sizes.

This grid will be a combination of native trees and exotic species and will aim:

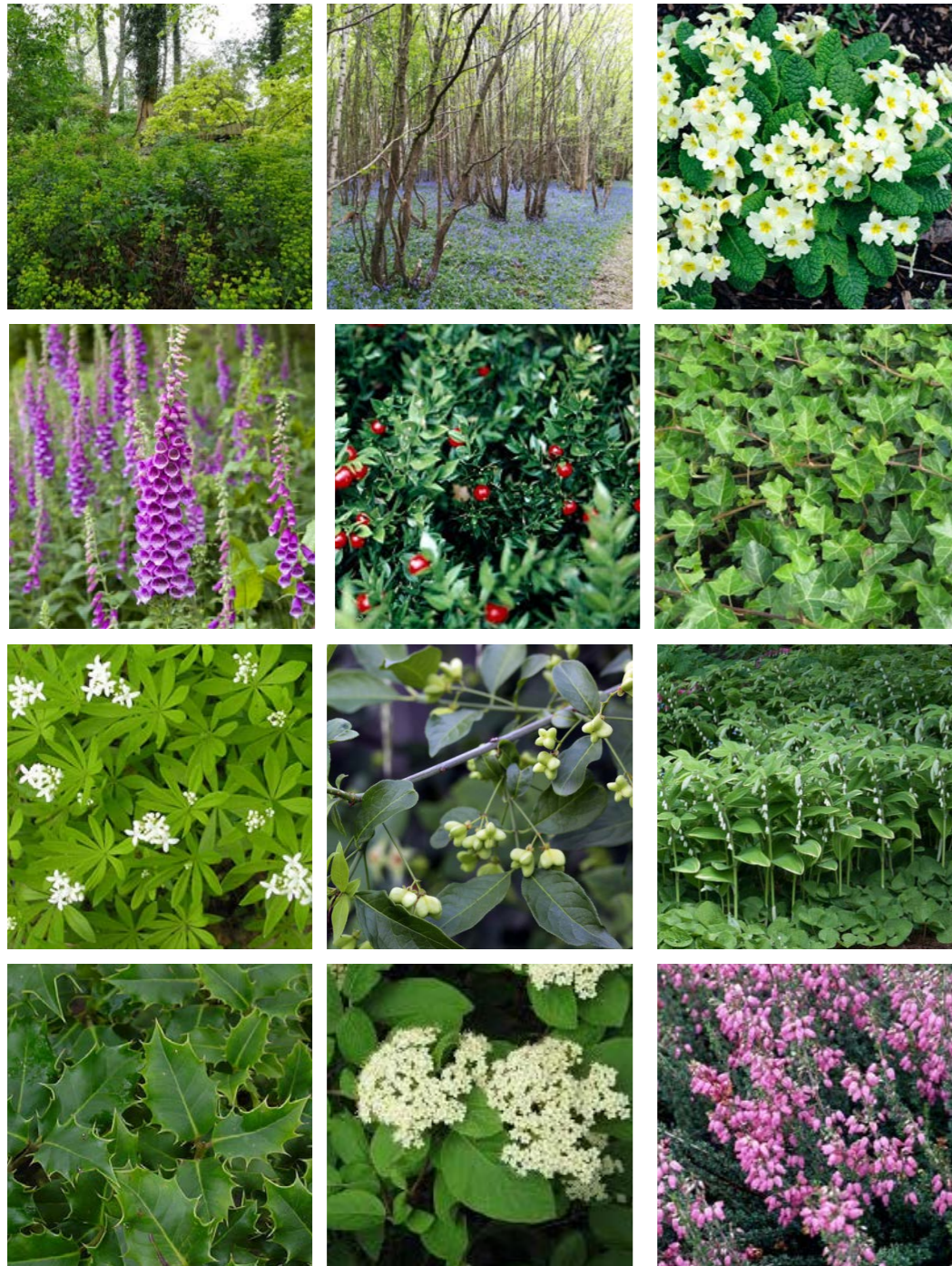
- to stress the ability for these species to cope with the evolution of climate change;
- to bring the forest, a larger resilience against pest and disease;
- to highlight the notion of time with different sized trees;
- to create a large tree canopy.

Alongside each tree, a stake with an educational purpose will be anchored in the ground. Information such as: specie, age of the tree, origin, size, aesthetic and ecological interest will be engraved as well as a QR code so visitors could find complementary information on a specifically designed mobile application while walking through the garden.

1- Natives planting

As a result the woodland creates natural layers that define the garden's organization. This will offer an opportunity to create a unique environment and ecosystem that encourages biodiversity.

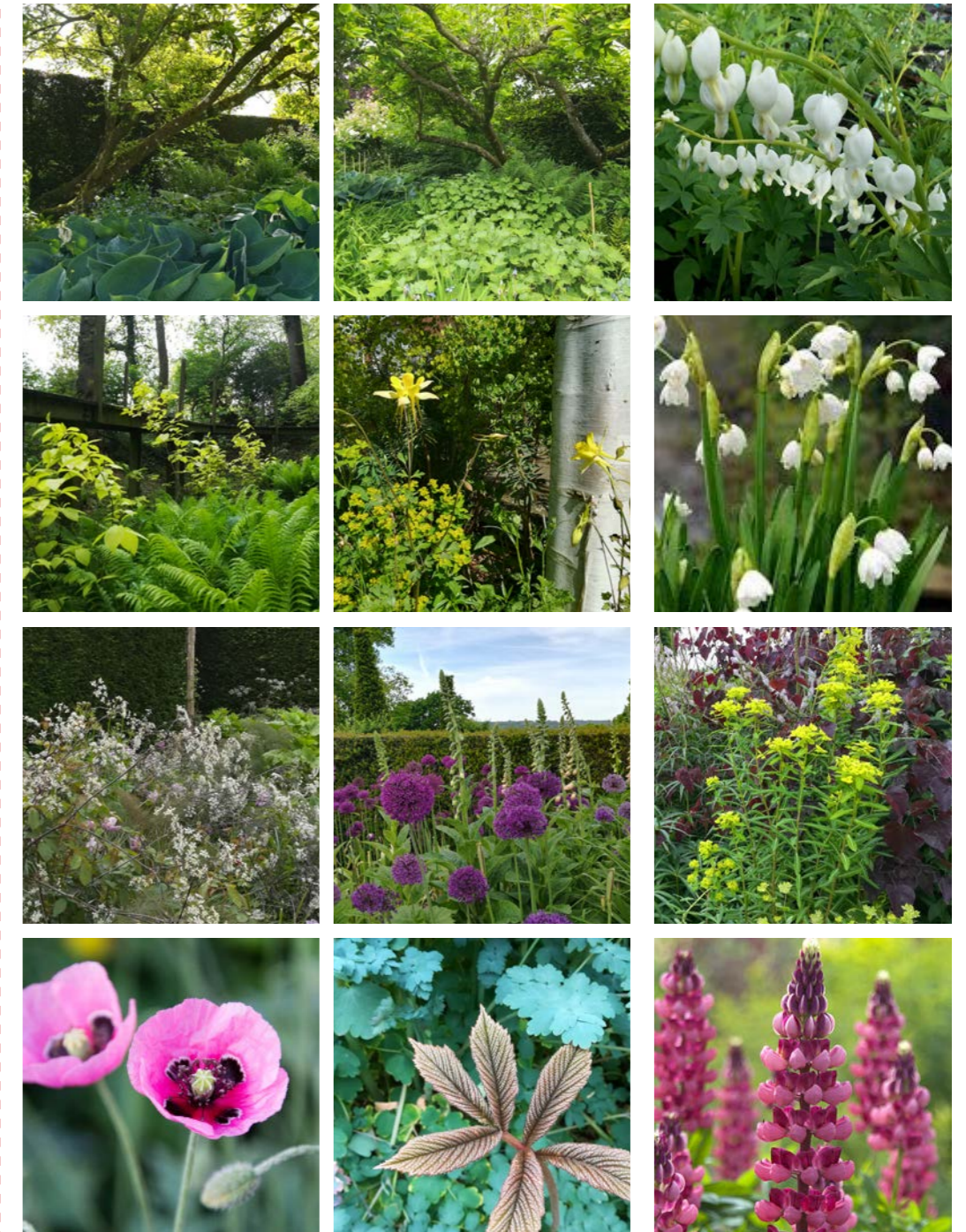
Thus, the woodland will be under planted with sweeps of bluebells that will visually lead the visitor throughout the wood and toward the center of the garden.



- Euphorbia amygdoloides, 10-50cm, Yellow
- Hyacinthoides non-scripta, 10-50cm, Blue-Purple
- Primula vulgaris, 10cm, Yellow
- Digitalis purpurea, 105-205cm, Pink
- Ruscus aculeatus, 50-100cm, White
- Hedera helix, 8-12m
- Galium odoratum / woodruff 15cm, White
- Euonymus europaeus, 3-7.5m
- Polygonatum odoratum, 70 cm, White
- Ilex aquifolium, 1,3m
- Dryopteris filix-mas linearis
- Ilex aquifolium, 1,3m
- Viburnum lantana, 2,5-4m, White
- Erica cinerea, 50-100cm, Pink-Purple or White
- Erica vagans, 10-50cm,
- Erica tetralix, 10-50cm,
- Erica hibernica,
- Anthriscus sylvestris, 70cm, White
- Myosotis sylvatica / Wood Forget-me-not, 20cm, Blue
- Vinca major, 10-50cm, Violet-Blue
- Lonicera
- Clumbine
- Sorbus minima

2- Woodland edge: Horticultural planting

As in William Robinson's book "The Wild Garden", the surroundings of the garden will be planted with natives: annuals, perennials and low shrubs. As we come closer to the central area of the garden, the plant palette will gradually become more horticultural.



3- Clearing - Meadow planting



- Hosta sieboldiana, 50-100cm, White Shaped Bell
- Kiringeshoma palmata, 50-100cm, Yellow
- Dicentra spectabilis 'Alba', 50-80cm, White
- Matteucia struthiopteris / Ostrich Fern, 100-150cm
- Cornus alba 'Aurea', 150-200cm
- Aquilegia chrysantha 'Yellow Queen', 90cm
- Leucojum aestivum 'Gravetye's Giant', 60cm, White
- Anthriscus sylvestris 'Ravenswing', 100-150cm, White
- Allium hollandicum 'Purple sensation', 50-100cm, Purple
- Euphorbia donii, 120cm, Yellow
- Papaver duvium ssq. lecoyii var. arbiflorum, 50cm, Pink
- Rodgersia podophylla, 100-150cm, Creamy White
- Thalictrum delavayi 'Ankum', 100-150cm, Purple
- Clematis alpina 'Wilsonii', 800-1200cm, White
- Oenothera biennis, 100-150cm, Yellow
- Rheum palmatum, 150-250cm, Pink-Creamy-White
- Ornithogalum Ponticum Sochii, 60-80cm, White
- Rosa 'Buff Beauty', 100-150cm,
- Romneya coulteri, 150-200cm, White
- Lupinus 'My Castle', 50-100cm, Pink
- Lupinus 'Chandelier', 50-100cm, Creamy Yellow
- Digitalis purpurea 'Camelot Rose', 90-120cm, Pink
- Digitalis Suttons Apricot, 100-150cm, Apricot-Pink
- Ammi visnaga, 80-100cm, White
- Lunaria annua var. albiflora, 50-100cm
- Epimedium x perralchicum, 10-50cm, Yellow
- Daphniphyllum macropodum, 4-8m
- Eryngium 'Sapphire Blue', 50-100cm, Blue-Purple
- Podophyllum hexandrum, 10-50cm, White
- Artemisia ludoviciana 'Valerie Finnis', 50-100cm, Insignificant
- Tulipa turkenista, 10-15cm, White-Yellow
- Eunonymus alatus, 1.5-2m
- Camassia leichtlinii subsp. suksdorfii 'Electra', 100cm, Blue
- Ornithogalum Ponticum Sochii, 60cm, white
- Leucojum aestivum 'Gravetye's Giant', 60cm, white
- Aquilegia flabellata pumila f. alba / Columbine
- Aquilegia alpina / Alpine Columbine
- Asphodelus albus
- Astrantia 'Hadspen Blood' / Hattie's Pincushion
- Corydalis flexuosa 'Purple Leaf'

In the central area of the garden is a formal sunken garden that aims to represent Gravetye Manor Hotel and Restaurant: a peaceful sense of place. A meadow of Cammasias and Ranunculus evokes feelings of serenity as well as offers an opportunity to observe the surroundings forest, while being immersed in the Cammassia meadow.

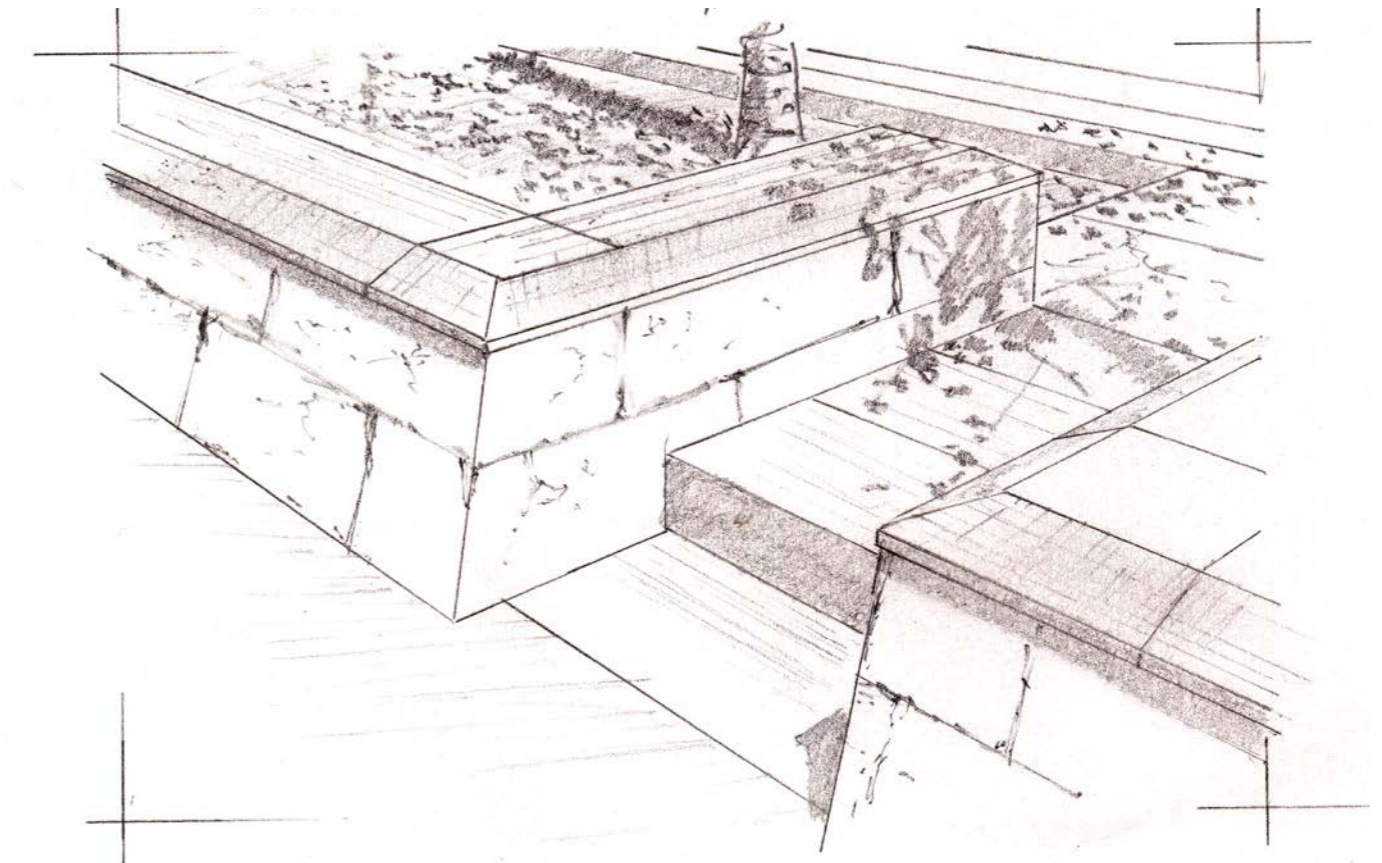
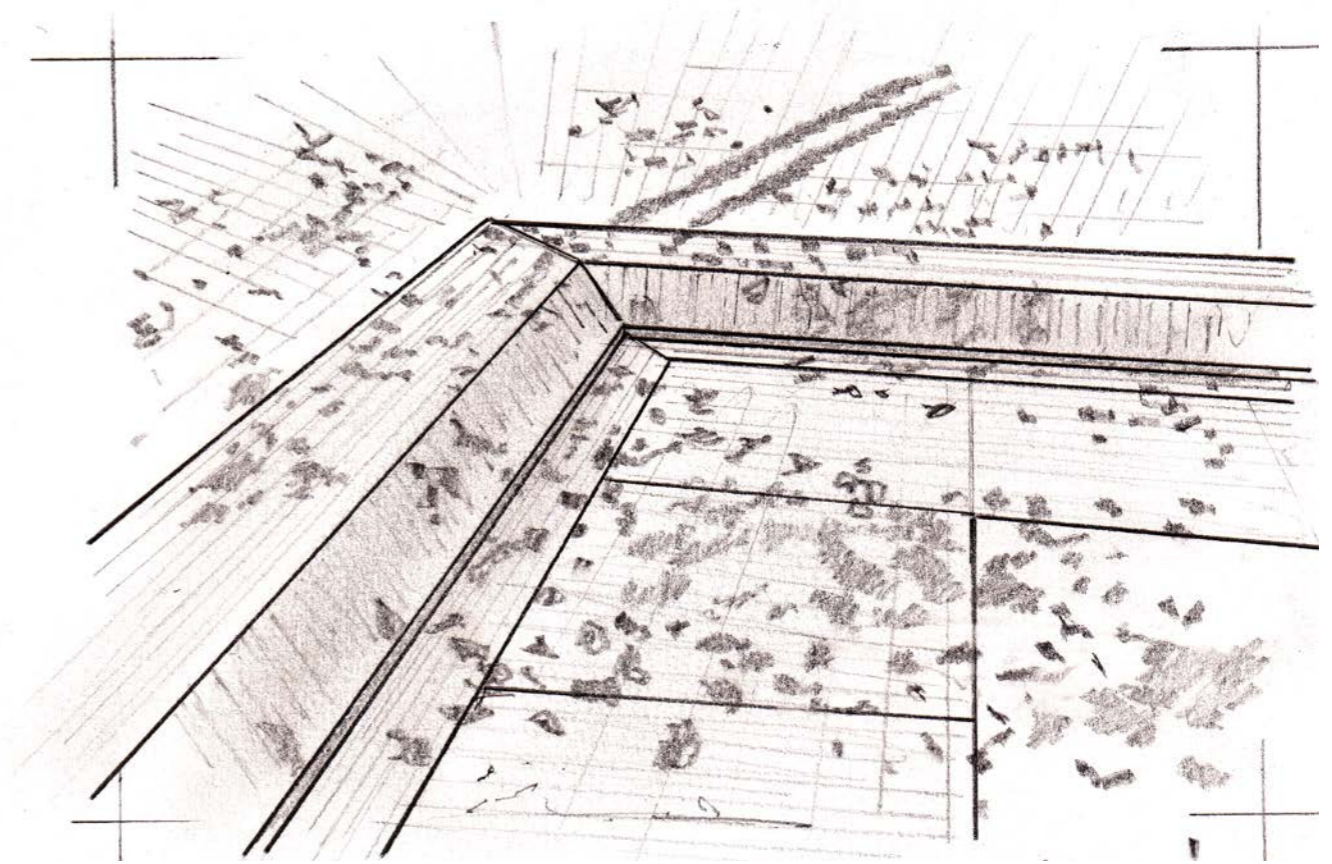
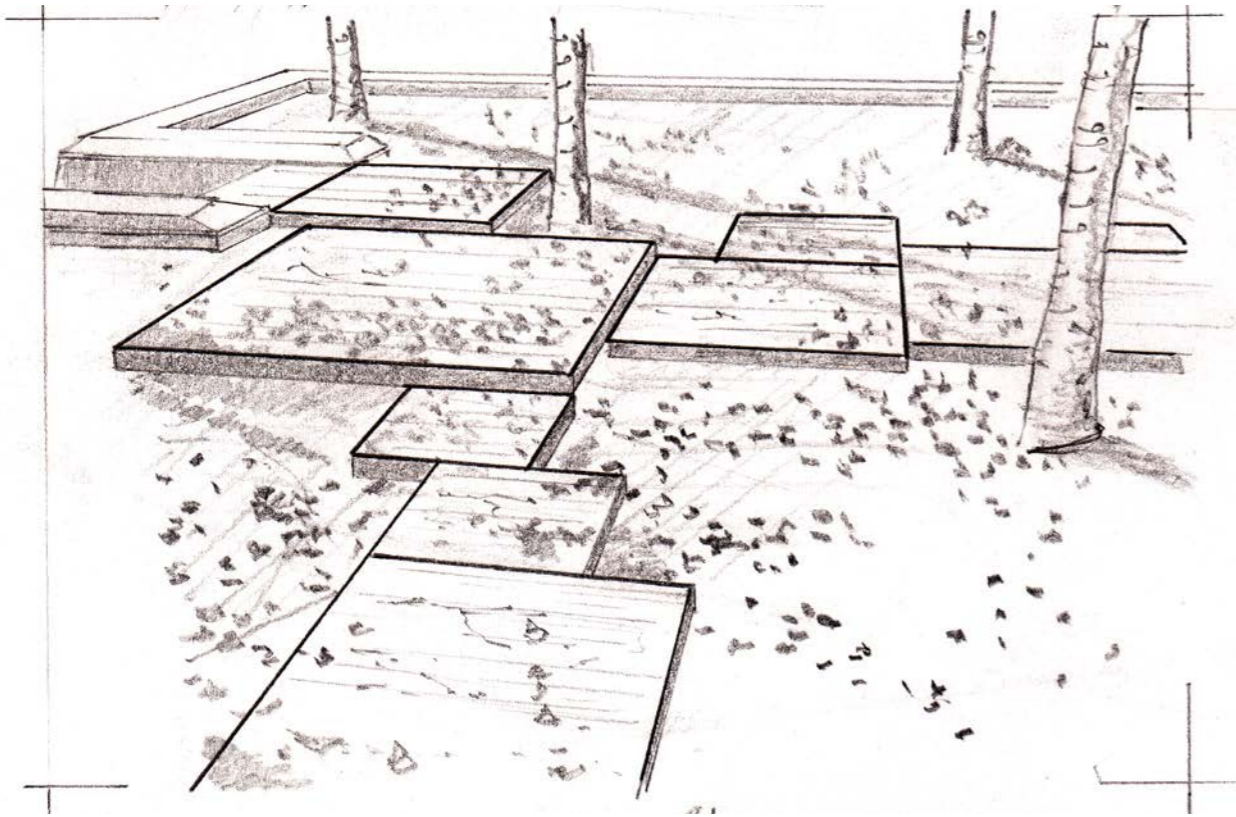
A rectangle pond symbolizes the spring that "has served Gravetye Manor for centuries".

A bespoke wooden bench (made using wood from a fallen tree from the forest of Gravetye) would be a suitable area for having bouquets of cut flowers. This bouquet display shall represent the gardens coming inside the Hotel and the exclusive and unique feeling you would find during your stay.



- 1- Camassia leichtlinii subsp. leichtlinii, 70cm, White & Blue
- 2- Camassia leichtlinii subsp. suksdorfii 'Electra', 100cm, Blue
- 3- Verbascum bombyceferum, 200cm, Yellow
- 4- Ranunculaceae acris, 50-100cm, Yellow
- 5- Rhinanthus minor, 30cm, Yellow
- 6- Geranium 'Patricia', 50-100cm, Pink
- 7- Geranium pratense, 80-100cm, Blue-Purple
- 8- Galidolus italicus, 50-100cm, Pink
- 9- Anthriscus sylvestris, 100-150cm, White
- Tulipa sylvestris, 10-15cm, Yellow
- Aquilegia flabellata pumila f. alba / Columbine
- Aquilegia alpina / Alpine Columbine
- Asphodelus albus
- Astrantia 'Hadspen Blood' / Hattie's Pincushion
- Corydalis flexuosa 'Purple Leaf'
- Dactylorhiza fuchsii, 15-50cm, Pale Pink to Purplish Pink

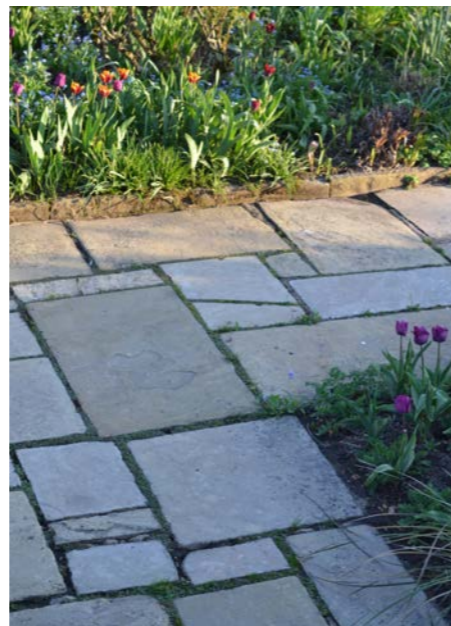




- 1 - Stone slabs and paving detail
- 2 - Stone edging on the perimeter of the clearing
- 3 - Retaining wall and steps details, leading to the garden



Materials



Sobriety will be found in the garden throughout a simple palette of materials. Both sandstone and yorkstone are found in the garden of Gravetye Manor.

The stone finish will translate and its sharp edges will express the high standard and the refinement of Gravetye Hotel & Restaurant.

A very long lasting material, the stone is a real anchor for the garden creating a canvas and a unique framework. The topography of the garden offers an opportunity to use levels: steps, slopes and a sunken garden structured with stone.

Reference photos of stone details from Gravetye Manor

HENRI HURTEBIZE LANDSCAPE ARCHITECT

h.hurtebize@gmail.com // +44 7 459 942 939
Nationality/ French // DOB/ 17-01-84

PERSONAL PROFIL

Lead Landscape Architect on large residential gardens in France and in the UK
Proficient knowledge of major design and illustration software programs
Strong planting interest

CURRENT AND PREVIOUS EMPLOYMENT

- / 2017 to current/** **GRAVETYE MANOR / GREAT DIXTER / TIDEBROOK MANOR // Gardener apprenticeship, Sussex**
– Develop further plant knowledge, planting techniques and strong understanding of garden management throughout the seasons
- / 2011 to 2017/** **DEL BUONO-GAZERWITZ LTD // Landscape Architect, London** delbuono-gazerwitz.co.uk
– Lead Landscape Architect for large projects in Provence, Antibes and London
– Daily running of projects for prestigious garden properties
– Full tender packages and specifications
- / 2010/ 6 mois** **TOM STUART SMITH LTD // Assistant Landscape Architect, London** tomstuartsmith.co.uk
– Assitant to the Landscape Architect for the creation of a garden and roof garden in Neuilly sur Seine
– Full tender package, specifications and translation
- / 2009/ 6 mois 1 mois** **HOTPLANT // Landscape Architect & Horticulturist, Perth, Australia**
– Regeneration of the gardens of the Departement of Education in Fremantle
- / 2008/ 6 mois** **GILLES CLEMENT // Landscape Architect, Paris** gillesclement.com
& COLOCO // Landscape Architects, Architects, Installation & Scénography, Paris coloco.org
– Project manager for the implementation of a roof garden on the former submarine base of Saint-Nazaire in Britany planted with 107 Populus tremula
- / 2008/ 6 mois** **LAND'ACT // Urbanism & Landscape Architecture, Paris** land-act.fr
– Worked on various public and corporate projects in France and Worldwide
– Assistant to the Project Manager on a urban regeneration project in a suburban area near Paris
– Technical drawings and planting plans
- / 2005 to 2008/** **MINERAL SERVICE // Landscape Contractor, Rouen, Normandy** mineral-service.fr
pasodoble.fr
– Part of a builder team for the implementation of a number of public and residential projects: a sustainable urban park near Rouen; a play and sport ground in Le Havre
- / 2005/ 2 mois** **SAMUEL CRAQUELIN // Landscape Architect, Lillebonne, Normandy**
– Assistant to the Landscape Architect for the regeneration of the Fort of Saint-Adresse in Le Havre with the creation of The Hangings Gardens

EDUCATION

- / 2006-2008/** **HAUTE ECOLE CHARLEMAGNE, UNIVERSITY OF GEMBLOUX, Belgium**
Bachelor in Landscape Architectures / With Hons
Diploma : Regeneration of an Hitoric Urban Park: Balbi Park in Versailles via sustainable & ecogical methods, including a didactic program for the preservation of biodiversity
- / 2004-2006/** **INSTITUT DE GENECH, Lille**
Diploma in Landscape Architecture
- / 2002-2004/** **UNIVERSITE DE ROUEN, Normandy**
Buisness Diploma
- / 2002/** **BACCALAUREAT SCIENCE AND ECONOMICS, Normandy**

SKILLS

French - English // Spanish // Programs // Fluent. Proficient technical writing skills
Basic knowledge
AutoCAD, Vectorworks, Sketchup
Adobe Suite Creative (Photoshop, In Design, Illustrator)
MS Office (Word, Excel, Access, PowerPoint); iMovie, Windows Movie Maker

SPORTS AND MAIN INTERESTS

Sports // Runing and related: Paris Marathon 2013; Deauville Triathlon 2014; Climb of the Mont-Blanc in 2016; Surf; kitesurf; Tennis (competition)

Art & related // Music: guitar player; Photography, Movie making, Hand-drawing

Travel & surftrip // Oceany; Asia; Central America; North Africa; Europe

Côme Savagnac

2 bis rue Hortense
Rueil Malmaison, 92 500
France

+33(0) 6 72 02 09 51
+44(0) 7517967095
csavagnac@hotmail.fr

Born February 10, 1992 (26 years old)
French Driving licence

Landscape designer junior dynamic and with expérience, degree in Masters of Landscape Architecture. Proficient knowledge of design process at different scale, multimedia design flair, hand drawing and botanic.

Education

- 2016 - 2017** Master's II, Historical garden heritage and landscape, **ENSA Versailles, ENSP Versaille and Panthéon-Sorbonne**
Historical analysis, Implementation of plan management
- 2012 - 2016** Degree and Masters of **Landscape Architecture, Graduate school of Gardens Architecture and Landscapes** (Paris)
- 2008 - 2012** BTEC and Bachelor: National Diploma in a vocational school of landscaping and horticulture in France
Ecole du Breuil (Paris)

Work Experience

- 2018 - present** Gravetye manor, 5 month
Gardener apprentice
- 2010 - present** Freelance activity
Advices, conception and landscaping for private gardens
- 2016 - 2018** Studio of David Baisson Girard - (Paris)
Worker as landscaper, two days a week
- 2015 - 2016** Péna Paysages - (75)
Worker as landscape designer ,two days a week
- 2014** Botanical garden of Vauville, 1 month
Carried on the garden collection, public relation.
- Royal Botanic Garden of Edinburgh - Benmore
Botanic Garden (Scotland), 1 month
Management of botanic's collection in historical parc of XIXe century
- 2013** Exotic and botanical garden of Roscoff, 1 month
Monitoring and management of the botanical collection.
- 2010** Landscape Camille Muller, 1 month
Achievement of one bring down in a particular hotel.
- 2009** Roche Guyon Castle, 1 month
Restoration of a vegetable formal garden.
- Horticulture & Jardins, 1 month
Involved in restoring of vegetable formal garden.

Skills

French: fluent
English: intermediate
Plan design and gestion plan
Pruning fruit trees and shrub

Computing:
- Autocad, Vectorworks
- Microsoft office
- Photoshop, Indesign, Illustrator

Interests

Sports, Hobbies: drawing, photography, trekking, climbing, mountain bike
Trips: Road trip in scotland and Scandinavian countries, Pérou, California, Sri lanka

The team



Côme Savagnac



Henri Hurtebize